

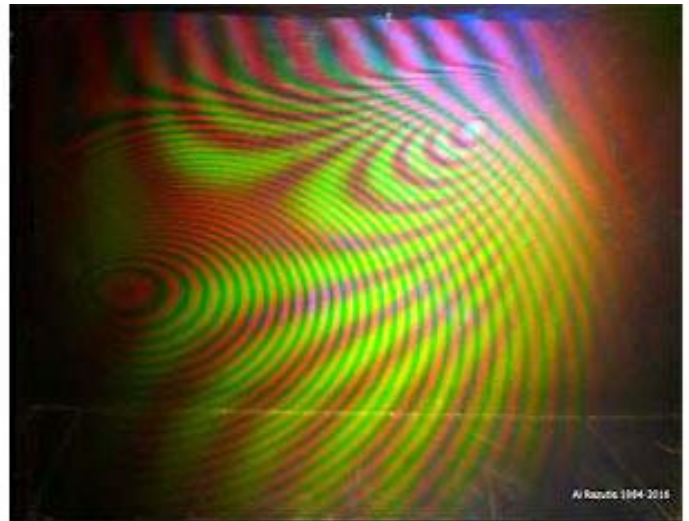
**INTERFEROMETRIC TRANSMISSION HOLOGRAMS -
INDIVIDUAL WORKS OR IN INSTALLATION**

BY AL RAZUTIS

Select pictured work to view additional web-page information and title card information.

FIELD

(STRESS TOPOGRAPHY #1)



Al Razutis, 1983 - Limited Edition #3 & #4 of 4
Two unique 12" x 16" interferometric rainbow holograms on glass
Single hologram for wall, hanging, or single hologram in installation cube
Silver Halide two-color Rainbow Holograms – Interferograms

Created by Al Razutis at Fringe Research, Canada
Exhibited in a number of international exhibitions as single wall/hanging piece

View: ['Stress Topography' web page on this work](#) - installation views - details, plus lab notes.

INSTALLATION NOTE:

This work is to be installed on a plinth in a glass cube where the glass plate acts as 'beam splitter' in the creation in the otherwise bare and dark exhibition room of this living interactive ambience of interference contours, 'as per the classic design of a Michelson Interferometer' which confirmed the nature and speed of light in a classic physics universe.

INCLINE
(STRESS TOPOGRAPHY #2)



'Incline' by Al Razutis 1983
12" x 16" (30 x 40 cm) - Silver Halide 2-Color Rainbow Hologram - Interferogram on glass

Al Razutis, 1983 - Limited Edition #4 of 4
12" x 16" - Silver Halide 2-Color Rainbow Hologram - Interferogram
Created by Al Razutis at Fringe Research, Canada

ARTIST'S CURATING STATEMENT - INSTALLATION VERSION:

Excerpted from WAVEFRONT Issue Fall 1986
AN AVANT-GARDE FOR HOLOGRAPHY BY WAY OF NEMESIS - by AL RAZUTIS

"Allegory of the Missing Object

Imagine walking into a darkened gallery space and perceiving only an optical configuration featuring a laser, beam splitter, lenses and the combined beams of a Michelson interferometer. The "object" in this case is the room ambience containing you, who "creates" the changes in the projected fringe pattern. A site-specific installation which could contain a hologram if it were deemed necessary to insert a photographic plate in the path of the combined beams.

Now further imagine being confronted by an image, or a condition alluding to an image, that speaks to you conceptually about the absence of the hologram but requires you to conceptually recreate this absent object. The stories this art would have you tell would reflect on your own conception and anticipation of holographic art and in a manner where reconceptualization is pre-eminent over art appreciation."

On the subject of holographic interferometry and reality

"All things in our universe are constantly in motion, vibrating. Even objects that appear to be stationary are in fact vibrating, oscillating, resonating, at various frequencies. Resonance is a type of motion, characterized by oscillation between two states. And ultimately all matter is just vibrations of various underlying fields."

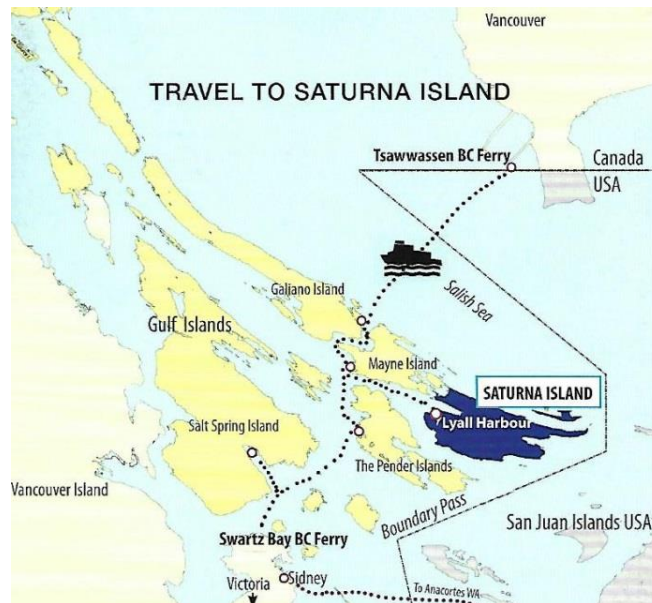
-- 'A New Theory of Consciousness', Tam Hunt, Scientific American, 2018

These works have been exhibited in a number of international exhibitions and have extensive histories.

To view these works in person

contact: alrazutis@gmail.com

Visual Alchemy Studio is located on Saturna Island, BC, Canada
Travel by air or ferry – with same day arrival / departure possible



By Ferry from Vancouver or Victoria, BC

BC Ferries operates a scheduled service to Saturna Island from Tsawwassen (Vancouver) and Swartz Bay (Vancouver Island). Vehicle and walk-on reservations are recommended between Tsawwassen and Saturna.

Please visit www.bcferries.com 1.888.223.3779

By Chartered and scheduled float plane service:

Harbour Air (Vancouver)	1.800.665.0212
Seair	1.800.447.3247
Salt Spring Air	1.877.537.9880
Kenmore Air (Seattle;Victoria/Gulf Islands)	1.866.453.9524

By Ferry from USA

Victoria Clipper (Seattle, WA - Victoria BC)	1.800.888.2535
Washington State Ferries (Anacortes, WA to Sidney, BC & Swartz Bay)	1.206.464.6400 1.888.808.7977
Black Ball Transport (Port Angeles, WA to Victoria, BC)	1.888.993.3779 1.800.264.6475

NEAREST CITIES WITH INTERNATIONAL AIRPORTS

Vancouver, BC, Canada (YVR)
Victoria, BC, Canada (YYJ)